

revista^{lab}
2022 
LIFE SCIENCE
REAL ESTATE
INVESTMENT FORUM

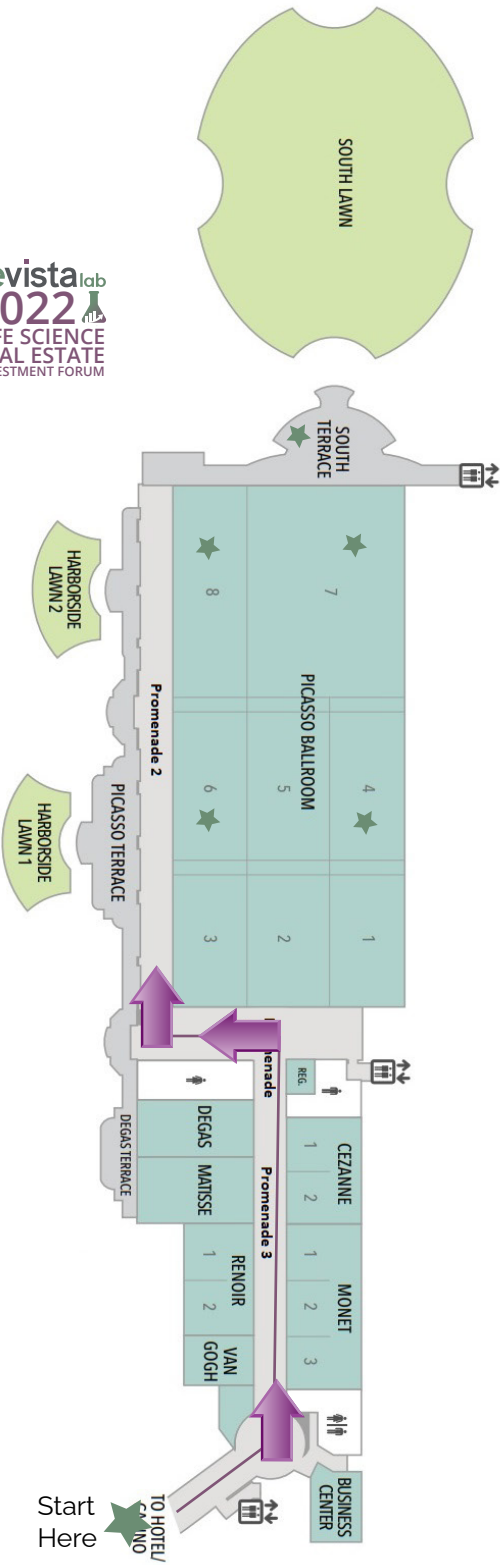


FINAL PROGRAM

OCTOBER 13-14, 2022
Encore Boston Harbor
Boston, Massachusetts

HOTEL MAP

revista^{lab}
2022
LIFE SCIENCE
REAL ESTATE
INVESTMENT FORUM



SCHEDULE AT A GLANCE

THURSDAY, OCTOBER 13, 2022

1:00 p.m. - 5:30 p.m.

Attendee Hub (Picasso 3)

2:30 p.m. - 3:15 p.m.

General Session: State of the Life Science Markets

Part 1: Bioscience Real Estate by the Numbers (Picasso 1&2)

3:15 p.m. - 4:00 p.m.

General Session: State of the Life Science Markets

Part 2: Expert Macro Overview (Picasso 1&2)

4:00 p.m. - 4:30 p.m.

Coffee & Networking Break (Picasso 3)

4:30 p.m. - 5:30 p.m.

General Session: Bioscience Capital Markets Executive Panel

(Picasso 1&2)

5:30 p.m. - 7:00 p.m.

Welcome Reception (Picasso 3 & Terrace)

FRIDAY, OCTOBER 14, 2022

8:00 a.m. - 12:00 p.m.

Attendee Hub, (Picasso 3)

8:00 a.m. - 9:00 a.m.

Networking Breakfast (Picasso 3)

9:00 a.m. - 10:00 a.m.

General Session: Bioscience Deal Spotlight (Picasso 1&2)

10:00 a.m. - 10:30 a.m.

Coffee & Networking Break (Picasso 3)

10:30 a.m. - 11:30 a.m.

General Session: Construction, Development & Repurposing of Lab Space

(Picasso 1&2)

11:30 a.m. - 1:30 p.m.

Keynote Luncheon & General Session: Real Estate Economy & Bioscience

(Picasso 1&2)

Introducing **revista**lab

Record funding levels for Bioscience Companies in recent years have fueled increasing industry demands for more life science real estate space and properties. Investors have answered this call by building out into existing markets as well as creating bioscience hubs in new markets. While facilities play a crucial role in achieving those goals, informed decision-making has been hindered by the lack of comprehensive national data about bioscience real estate, including such basic facts as location, size, construction, and transactions.

Revista began providing the nation's only medical real estate data service, RevistaMED, in 2014 that now boasts more than 1000 users, and 500 attendees at their annual executive-level networking event. Revista will now be offering the industry's only property-level database of life science real estate as well as introducing data for the largest three bioscience markets of Boston, San Francisco, and San Diego - RevistaLAB

Chicago, NYC/NJ and Philadelphia...Coming Soon!

EVENT INFORMATION

ATTENDEE HUB

First things first - stop by the "Attendee Hub" in Picasso 3 for this inaugural RevistaLAB event. Inside you will be able to pick up your registration badge, as well as your attendee padfolio complete with our final program, attendee listing, and other materials to make your time with us successful. Take advantage of this space to network and enjoy coffee breaks.

Wi-Fi ACCESS

Stay connected during #revistalab22 on the complimentary wi-fi network and automatically connect.

SPONSOR DISPLAY TABLES

Visit RevistaLAB's Partner and Sponsor tables in Picasso 3 on the first floor of the hotel. Unauthorized items will be discarded.

SPEAKER PRESENTATIONS

Speaker presentations will be made available through the Attendee Hub Mobile App and revistalab.com

REVISTA DATA BRIEFS

For most Executive Breakout Sessions you attend, you can download a RevistaLAB "Data Brief" with useful data and analysis to enhance the presentation or session you are attending.

MOBILE EVENT APP

Download this years Attendee Hub Mobile Event App for #revistalab22. Access the event schedule and customize your agenda with personal appointments. See all the speakers, read their bios, and download presentations. Check out who's sponsoring and receive important updates through the app's notifications. See who's attending and start networking today! Available for download in your mobile device app store. Search for CVENT EVENTS, then Revistalab Events. You will use the email address you registered with to gain access.



CONSENT TO PHOTOGRAPHY

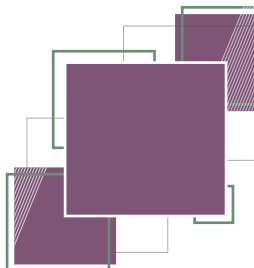
Revista attendees agree to be photographed by our onsite photographer for future press and marketing materials.

PLEASE SILENCE YOUR PHONE

We appreciate this courtesy to speakers and fellow attendees during RevistaLAB General Sessions.



*TWITTER: @revista_cos
Share your experience!
#revistalab22*



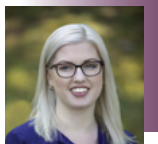
GENERAL SESSION - 2:30 p.m. - 3:15 p.m.

State of the Life Science Markets Part 1: Bioscience Real Estate by Numbers [Picasso 1&2]

Data, Facts, Trends & Top Markets! Join us for what will be an annual conference kick-off session that provides an industry outlook that is informative and data-driven. We will provide a national overview of trends and the data-based outlook for the Life Science sector. Plus, get a deep dive on the top three markets with newly released RevistaLAB data. This popular session features charts, graphs with market trends on construction, transactions and more that will help tenants and investors make more informed, strategic decisions about their portfolios. Find out why attendees regularly request the data-packed slides from this session!

Speakers:

Mike Hargrave, Principal, Revista
Hilda Martin, Principal, Revista



GENERAL SESSION - 3:15 p.m. - 4:00 p.m.

State of the Life Science Markets Part 2: Expert Market Overview [Picasso 1&2]

Record funding levels for Bioscience companies in recent years have fueled increasing industry demands for more life science real estate space and properties. Investors have answered this call by building out into existing markets as well as creating bioscience hubs in new markets. But how has this sector been evolving since the onset of the pandemic; and now in light of economic headwinds? What is leasing activity like and what is being forecasted nationally and in core markets? Outside of core markets, which secondary and tertiary markets are leading in life sciences real estate investment growth? Where are the next opportunities for innovation and disruption in the sector? Join us and participate in this discussion!

Moderator/Speaker: Tom Errath, Managing Director, Harrison Street

Speakers: Lauren Gilchrist, Managing Director Research, Longfellow
Allison Rath, Director, Ventas



GENERAL SESSION - 4:30 p.m. - 5:30 p.m.

Bioscience Capital Markets Executive Panel [Picasso 1&2]

These expert panelists will share their insights on the debt and equity markets moving into 2023 - and their impact on bioscience real estate. They will touch on topics such as: Investor views on the economy, interest rates and investing landscape - and how these will impact their 2023 strategies. Who are the major players coming out of 2022 and is this changing? Are there opportunities in new and emerging markets? What will the next 2-5 years look like for the sector with the continued impact of the pandemic and recession? And finally - are there any surprises on the horizon related to underwriting standards, investment strategies, interest rates, valuations, demand for new development and other factors. Don't miss this impressive panel!

Moderator: Will Germain, Managing Director, MCB Science + Health

Speakers: Fran Federman, Chief Financial Officer, IQHQ

Carrie Hiebeler, Co-founder & Managing Partner, Greene Park Capital

Andrew Pyke, Head of Healthcare Real Estate, Nuveen



GENERAL SESSION - 9:00 a.m. - 10:00 a.m.

Bioscience Deal Spotlight [Picasso 1&2]

Despite the pandemic and economic instability, 2022 is turning out to be another great year for bioscience real estate transactions. What are some of the most interesting life science real estate deals of the past year? What were the lessons learned? The panel will cover current transaction trends including cap rates and other pricing metrics. Recent deals will be profiled by investors to include structures, pricing, stakeholders and challenges that were overcome. Don't miss these executives as they unpack the details about their notable deals from this past year.

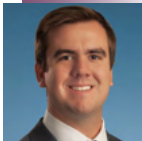
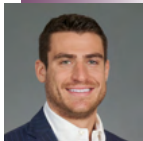
Moderator: Mike Conn, Chief Development Officer, Meridian

Speakers: David Thomann, Director, Life Sciences, Cushman & Wakefield

Travis McCready, Head of Life Sciences, Industries America, JLL

George Ross, Vice President, Harrison Street

R. Brent Webb, Development Executive, Mortenson



GENERAL SESSION - 10:30 a.m. - 11:30 a.m.

Construction, Development & Repurposing of Lab Space

[Picasso 1&2]

Join this data-filled session for detailed construction and development stats from the top three markets - including a drill-down into the local Boston market. What projects are under construction and in the pipeline? Who are the most active players in new construction, remodeling, expansions, and innovative repurposing these days? Discuss answers to these questions, ask your own, and hear about specific projects from experienced stakeholders in the business!

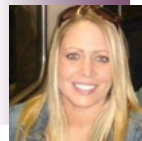
Moderator: John Mugford, Editor, HREI, BREI

Speakers: Kyle O'Connor, President, MLL Capital

Jessica Ostoyich, Market Director, Mortenson

Ben Sayles, Managing Director, Longfellow

Mike Wilcox, Senior Vice President, Director of Leasing, Bulfinch



KEYNOTE LUNCHEON & GENERAL SESSION -

11:30 a.m. - 1:30 p.m.

Real Estate Economy & Bioscience [Picasso 1&2]

We are thrilled to welcome Jim Costello to provide an overview of real estate economic trends and their implications for life science real estate today. Renowned as one of the leading experts in economics, capital markets and commercial real estate, Mr. Costello will provide his innovative insights into the macro forces that are currently affecting - and are likely to affect - our industry. He'll give his thoughts on issues such as inflation, labor markets and supply chain challenges as well as the dynamic relationship between the economy, regulation, and market performance. Please join us!

Keynote Speaker: Jim Costello,

Head of Real Estate Economics,

Chief Economist MSCI - Real Assets, MSCI



NOTES

- REVISTALAB PLANNING COMMITTEE -

Daniel Bruce
Senior Director - Life Science
Healthpeak Properties, Inc.

Hilda Martin
Principal
Revista

Tom Errath
Managing Director
Harrison Street

R. Brent Webb
Development Executive
Mortenson

Elisa Freeman
Principal
Revista

Nicole DeStefano Whaley
Events, Marketing &
Communications Manager
Revista

Wilmington Germain
CEO & Managing Partner
MCB Science & Health LLC

Murray Wolf
Publisher & Founding Editor
Bioscience Real Estate Insights

Mike Hargrave
Principal
Revista

MEET OUR PARTNERS

- SIGNATURE PARTNERS -



HARRISON STREET



Healthpeak[®]
PROPERTIES

- INDUSTRY SPONSORS -



CALIFORNIA
LIFE SCIENCES

LIMITLESS POSSIBILITY
LIVES HERE



We owe a debt of gratitude to these companies for helping make the data and events we provide to the life science real estate industry possible.